



**See More. Earlier. Faster.**

## **SATELLITE SYMPOSIUM**

**Tuesday 27 September**

**TIME** 12:15-13:15    **ROOM** Michelangelo Ballroom A

**See More. Earlier. Faster.  
Fetal Heart & Brain**

*Chair: Dr. Roland Axt-Fliedner (Germany)*

**First trimester cardiac assessment –  
How can we see the heart better?**

*Dr. Jader Cruz (Portugal)*

**Tissue doppler imaging and speckle  
tracking of the fetal heart –  
What can we expect?**

*Dr. Monique Haak (The Netherlands)*

**Decrease in cephalic biometry –  
A systematic approach to the CNS**

*Dr. Laurent Guibaud (France)*

### **ISUOG 2016 Showcase and Educational Events hosted by Toshiba Medical**

We have invited some of the industry's leading obstetricians to share their in-depth knowledge and skills on the latest imaging technologies in our comprehensive workshop. If you would like to reserve a seat in our hospitality suite, you can register at [toshiba-medical.eu/isuog2016](http://toshiba-medical.eu/isuog2016). Also make sure to visit our booth to learn about our Women's Health solutions that allow you to see more, earlier, faster.

### **TOSHIBA MEDICAL SYSTEMS CORPORATION**

[www.toshibamedicalsystems.com](http://www.toshibamedicalsystems.com)

©Toshiba Medical Systems Corporation 2016. All rights reserved.  
Design and specifications subject to change without notice.

## **PROGRAM**

- **SATELLITE SYMPOSIUM**
- **HOSPITALITY SUITE**
- **LIVE SCAN  
DEMONSTRATIONS**



**26th World Congress on Ultrasound  
in Obstetrics and Gynecology**  
25 – 28 September 2016, Rome, Italy

# Welcome

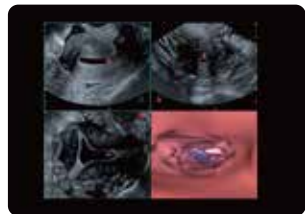
Toshiba Medical invites you to attend our educational sessions offered during the ISUOG World Congress in Rome, Italy. We will be hosting a Satellite Symposium on Tuesday and scientific sessions in our Hospitality Suite, throughout the day from Sunday till Wednesday, introducing the latest advances in Ultrasound imaging for Obstetrics and Gynecology.



SMI Fetal Heart 1st Trimester



Smart Fusion Fetal Brain



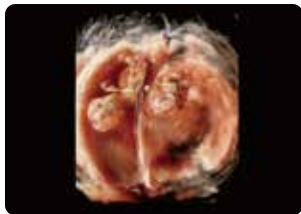
Fly Thru Fallopian Tube



ADF Aortic Arch



SMI Fetal Brain 2nd Trimester



Shadow Glass Twin

## HOSPITALITY SUITE

ROOM Carvaggio Room 6

### Sunday 25 September

- 13:30 - 14:00 **First trimester, early detection of structural anomalies**  
*Dr. Jader Cruz (Portugal)*
- 15:20 - 15:50 **US-MRI fusion imaging: What can we expect for the diagnosis of pelvic endometriosis?**  
*Dr. Danielle Tournadre (France)*

### Monday 26 September

- 09:50 - 10:20 **Advanced analysis of the fetal heart with speckle tracking**  
*Dr. Christian Enzensberger (Germany)*
- 13:00 - 13:30 **Advances in ultrasound investigation of gynaecological disorders**  
*Dr. Bill Smith (United Kingdom)*
- 15:10 - 15:40 **CNS examination – Plea for precise anatomical landmarks**  
*Dr. Laurent Guibaud (France)*

### Tuesday 27 September

- 09:50 - 10:20 **Current status of fetal cardiac interventions – Role of myocardial function imaging**  
*Dr. Roland Axt-Fliedner (Germany)*
- 12:15 - 13:15 **SATELLITE SYMPOSIUM**  
See More. Earlier. Faster. Fetal Heart & Brain
- 15:10 - 15:40 **Advances in ultrasound investigation of gynaecological disorders**  
*Dr. Bill Smith (United Kingdom)*

### Wednesday 28 September

- 09:50 - 10:20 **Additional value of fusing ultrasound with MRI in fetal neuro sonography**  
*Dr. Alvaro Cohen (Portugal)*
- 13:00 - 13:30 **A practical approach to the myocardial performance index**  
*Dr. Sanne Eschbach (The Netherlands)*
- 14:50 - 15:20 **CNS examination – Plea for precise anatomical landmarks**  
*Dr. Laurent Guibaud (France)*

## LIVE SCAN DEMONSTRATIONS

SPONSORED BY TOSHIBA MEDICAL

### Monday 26 September

ROOM Michelangelo Ballroom B

- 08:15 - 08:35 **Live scan demo 1**  
**Assessing the vessels and venous return**  
*Dr. Julene Carvalho (United Kingdom)*

ROOM Michelangelo Ballroom A

- 11:00 - 11:20 **Live scan demo 2**  
**Advanced fetal brain scanning**  
*Dr. Laurent Guibaud (France)*